

OCSH FIBER DISTRIBUTION HUB SPLICE CABINET



The Optimus Fiber Distribution Hub Splice Cabinet (OCSH) is a high-density, vault-mounted fiber distribution hub solution designed for centralized split, FTTX deployment architectures. The OCSH features a robust, powder-coated aluminum shell which accommodates up to 288F in a compact footprint and allows operators to scale the cabinet to their network design maximizing return on investment.

Using Channell's Universal Splice Tray (UST) platform, the OCSH can accommodate up to 16 UST trays for 288F single-fiber or ribbon splicing. 10 cable entry ports also increase flexibility and allow for easy expansion in the field. The OCSH eliminates costs associated with additional hand-holes, vaults, or splice-cases. Extra cable slack can be stored in the 12" integrated pad skirt.

PRODUCT DETAILS

Feature	Benefits
5052 H32 high-strength aluminum with welded and gasketed seals	Lightweight design delivers decades of cabinet life and protection of internal elements from corrosion
288F patch and splice max capacity with integrated Universal Splice Trays (UST)	Stubless design provides flexibility and modularity by eliminating costs with additional hand-holes, vaults, and splice-cases
Modular design with preloaded pigtails and trays	144F quick upgrade kit with 12F adapter expansion panels and splice tray stack assembly provides quick expansion when needed
Up to 16 SMFH splitter module capacity	Variety of centralized split architectures available for All GPON, EPON, and RFOG deployments
Splitter modules meet/exceed GR1209 and GR1221 optical requirements with GR326 connectors	Ensures maximum quality and reliability for the highest uptime and revenue generation
Designed to NEMA 4 Standards	Powder coated, welded and gasketed cabinets are water and dust tight



Pre-installed pigtails are routed directly into the Universal Splice Trays (UST) which provide protection for single-fiber or ribbon cable splices. Additional tray stack can be added for easy expansion.



16-slot SMFH splitter module capacity accommodated multiple types of splitter configurations from multiple 1x2 up to 1x64.

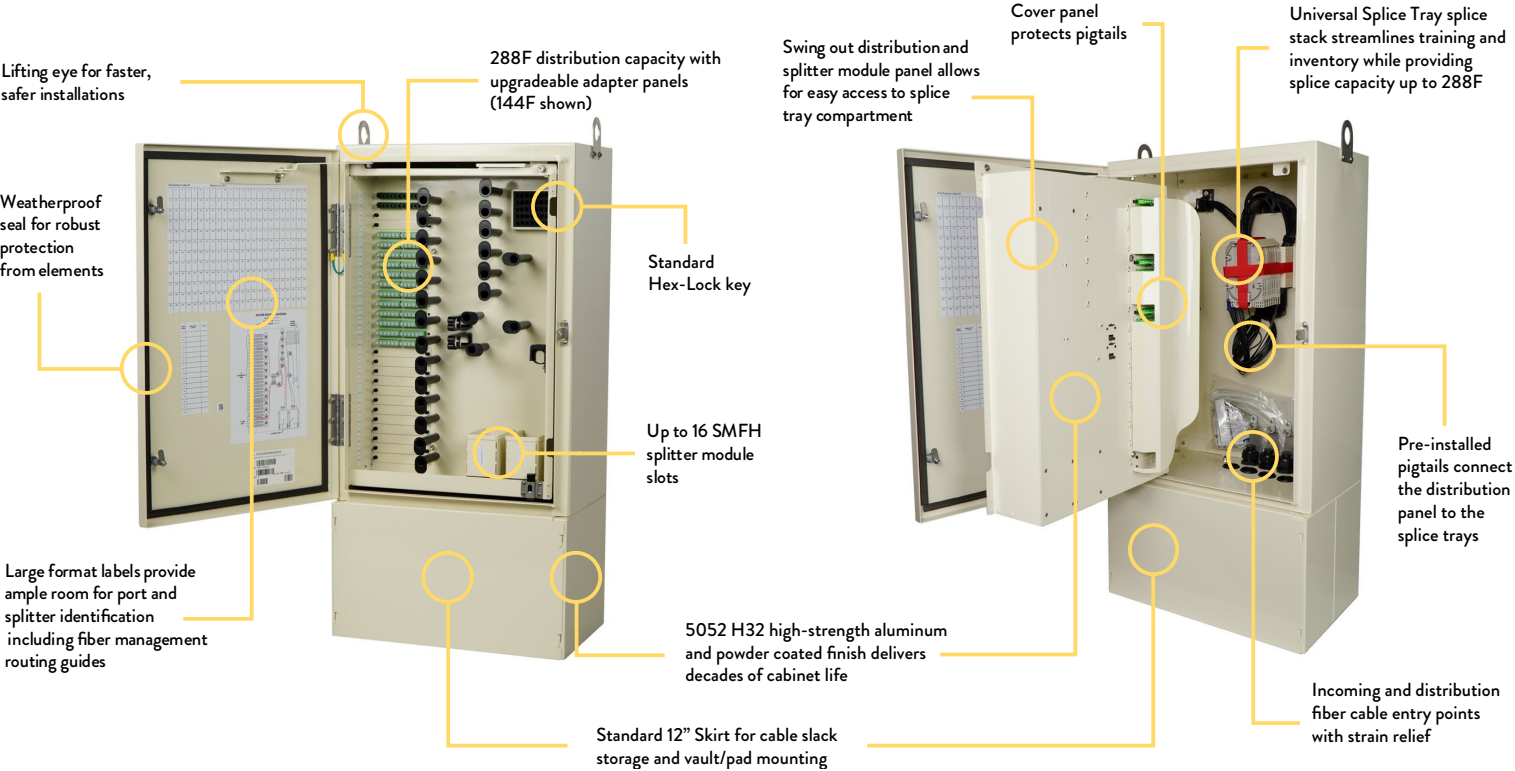


Unused splitter inputs/ outputs can be plugged into temporary panel for future expansion.



288F distribution capacity with upgradeable adapter panels (144F shown).

PRODUCT DETAILS



RECOMMENDED PART NUMBERS

Part Number	Description
OCSH288CABANAS2AN	OPTIMUS CABINET SPLICE HUB, 288F, SC-APC, 24F FEEDER, 144F DISTRIBUTION, 12" SKIRT, SINGLE-FIBER, BEIGE
OCSH288CABBNAS2AN	OPTIMUS CABINET SPLICE HUB, 288F, SC-APC, 24F FEEDER, 288F DISTRIBUTION, 12" SKIRT, SINGLE-FIBER, BEIGE
OCSH288CABBNAS2AE	OPTIMUS CABINET SPLICE HUB, 288F, SC-APC, 24F FEEDER, 288F DISTRIBUTION, 12" SKIRT, SINGLE-FIBER, BEIGE, BULK2436
OCSH288CABBNAS2AL	OPTIMUS CABINET SPLICE HUB, 288F, SC-APC, 24F FEEDER, 288F DISTRIBUTION, 12" SKIRT, SINGLE-FIBER, BEIGE, BULK3048



12" skirt has a removeable panel for easy access to cable slack storage and provides additional height for installers/ technicians

Inner door has large weatherproof labels for distribution port ID's and splitter labels along with visual fiber routing guide



PRODUCT DIMENSIONS

Distribution Count	Dimensions	Recommended Feed Count	Splitter Module Capacity	Cable Ports	BULK Grade Level Box Options
288	43"H X 21.5"W X 13"D	24 Fiber (48F optional)	16	10	24x36x36 / 30x48x36



SPLITTER CONFIGURATIONS

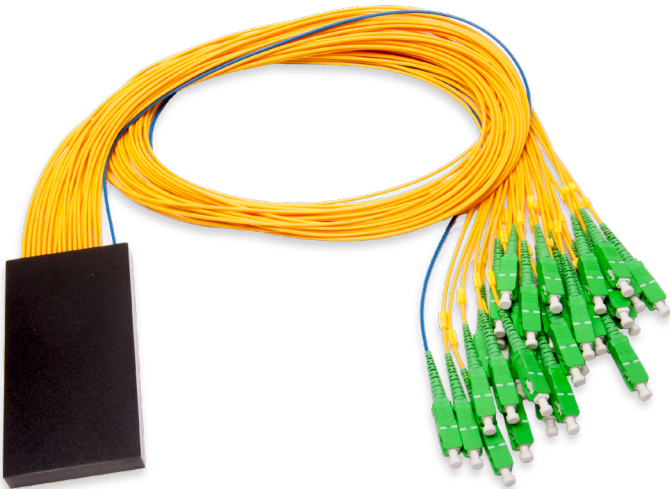
Part Number	Description
SMFH1132AAC	1x32 splitter module for Green Hornet Fiber Hub, SC/APC
SMFH1164AAC	1x64 splitter module for Green Hornet Fiber Hub, SC/APC



Optimus HUB Splitters can be mounted in Optimus FDH Cabinets, Green Hornet Fiber Hubs and or Green Hornet Enclosures. Channell’s FX Product Packages offer the highest performance Spec in the Fiber market today.

Features

- Fiber Bend Radius Protection provides timeless performance
- Splitters meet/exceed GR-1209 and GR-1221 certification
- Splitters are Verizon P-FOC certified
- 1x32 and 1x64 splitter modules for max density



PRODUCT MATRIX

	OCSH	XXX	C	X	X	X	X	X	X	X	X	X
OCSH – Optimus Cabinet Splice Hub												
Splice Capacity	288											
C	C											
Connector Type	A SC/APC											
Feeder Count	N None A 12-Fiber B 24-Fiber C 36-Fiber D 48-Fiber											
Distribution Count	A 144-Fiber B 288-Fiber											
Splitters	N None											
Bracket	A 12" Skirt Pad Mount B Pole Mount C Wall Mount											
Fanout Type	S Single-Fiber R Ribbon											
Cabinet Color	2 Beige											
Handle/Hasp Options	A Hex Head Entry and Padlock Hasp											
Bundle Option	N None E BULK4170002307...BULK SHIELD SPECIAL, 2436, 24"D (144/288 CABINET (NO LOGO/SPLIT LID, HEX BOLT) L BULK7170002744...BULK SHIELD 3048, 36"D FOR OCFH 288/432/576 CABINET (NO LOGO, SPLIT LID, HEX BOLT, MARKER)											



www.channell.com

All specifications subject to change without notice. © 2025 Channell Commercial Corporation. All rights reserved.