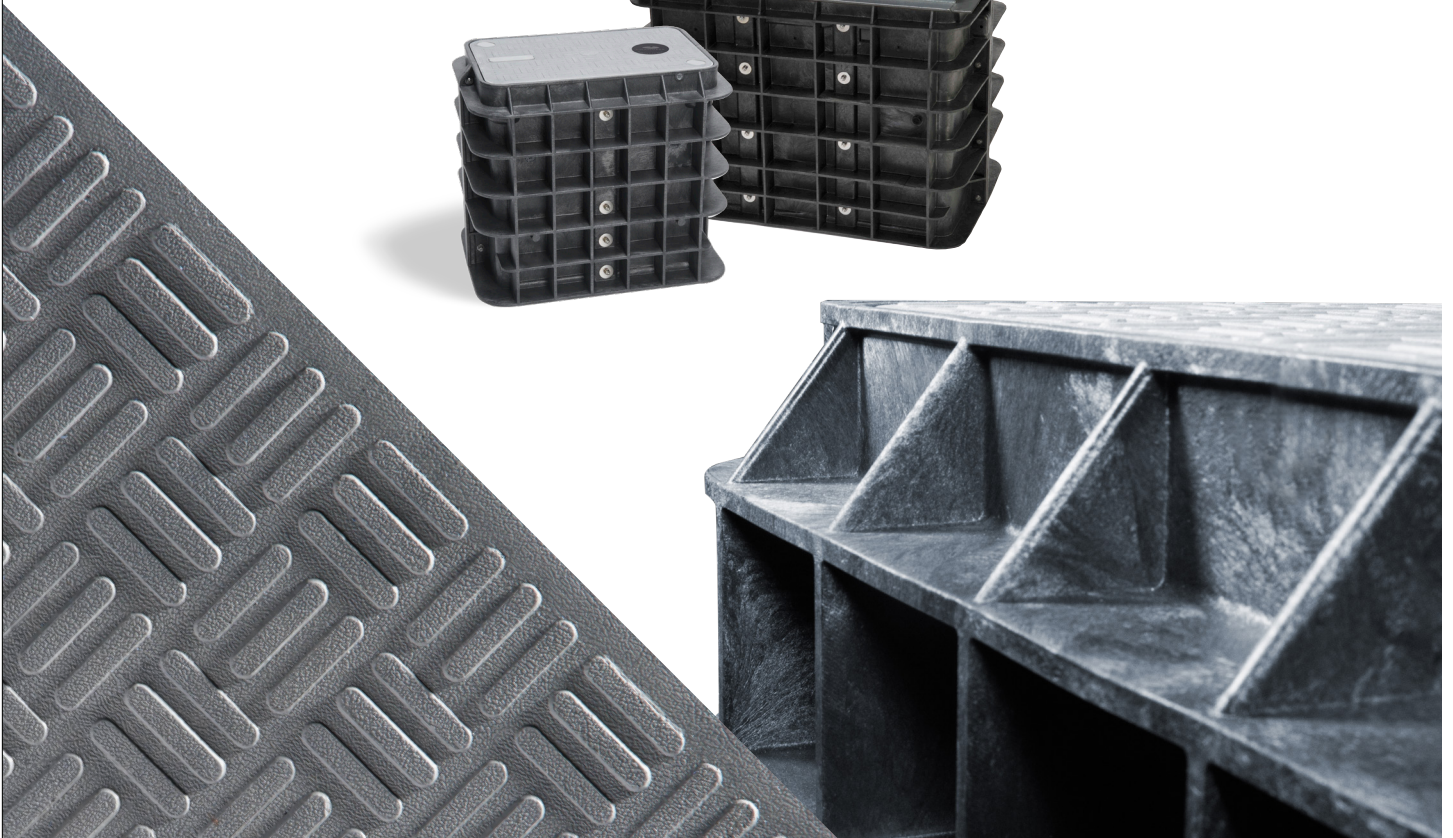




CHANNELL

BULK SPECIFICATION AND SELECTION GUIDE

With over 100 years experience in global (OSP) infrastructure, Channell has developed the most advanced vault and handhole technology in the world. Channell's BULK and SHIELD patented designs with the complement of SUPER BULK for non-deliberate H-20 applications offer global users, consumer, and craft installers safety benefits never before contemplated, but critical when considering new global health and safety standards.



PRODUCT SUMMARY

BULK's lightweight design enhances installation efficiency and load capacity compared to concrete and polymer concrete, ensuring installer safety and reducing installation time. It also prevents harmful dust during field duct cutting, protecting respiratory health.

SHIELD covers meet or exceed ANSI/ SCTE 77 Tier 22 (33,750lb) load ratings, are 50%-70% lighter than concrete, polymer concrete, and cast iron, reducing injuries and improving safety. They feature anti-slip and anti-trip designs, offering 20% better slip resistance when compared to polymer concrete, concrete, and steel covers.

Together, BULK and SHIELD meet high industry standards, including DOT, Rail, FTTH, Power & Utility, and Broadband, and are tested for durability with Channell's Endurance Stress Testing (EST™). These innovations make them a preferred choice for global OSP infrastructure.



FEATURES

- Upgradeable
- Lightweight/Strong
- Patented Anti-Slip Technology
- Anti-Seize Bolt Technology
- Industry Leader in Anti-Trip Hazard Prevention
- Superior Fatigue Resistance (EST)[™]
- Vertical and Horizontal Rib Design
- Embedded Vertical Racking
- Reduced Installation Cost
- Highest Load Rating to Weight Ratio in the Industry

TESTING CRITERIA

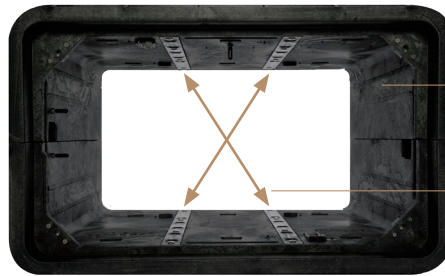
Covers meet or exceed:

- ANSI/SCTE 77 2013-TIER 22
- Telcordia GR-902-CORE
- Western Underground Committee Guide 3.6
- EST[™] 3 Million Cycles

BULK Bodies meet or exceed:

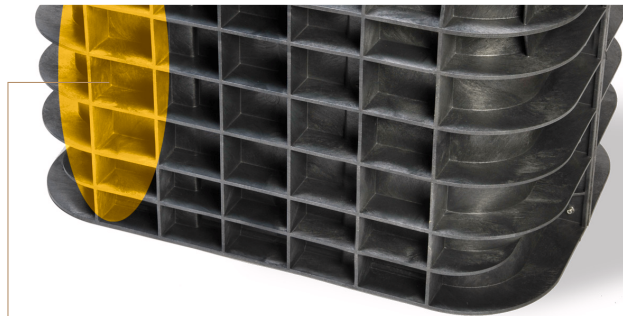
- ANSI/SCTE 77 2013-TIER 22
- Telcordia GR-902-CORE
- Western Underground Committee Guide 3.6
- AASHTO M-306 (H-20/25)
- AS3996-Class B/C
- ASTM-457

BODY DESIGN



Straight wall design improves lid load strength.

Flush mounted racks enhance sidewall and vertical strength of pit while increasing usable space.



Ribbed sidewall design secures body into backfill soil and eliminates sidewall deflection.

LID OPTIONS

3 covers

Composite Ring
Optional

HDPE Plastic Cover
 Light Duty 3,000 lbf (13.5 kN)

Composite Cover
 33,750 lbf (150kN)

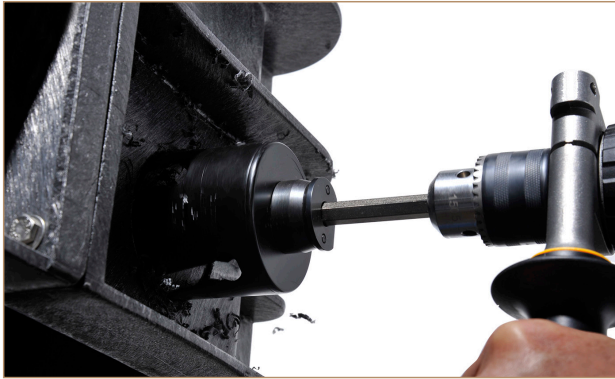
Ductile Iron Cover and Ring
 56,200 lbf (250 kN)

BULK Vault Body
 60,000 lbf (267 kN)

1 body

SPECIFICATION	PROOF LOAD	PRODUCTS
Pedestrian/Light Duty	3,000 lbf (13.5 kN)	BULK
ANSI/SCTE 77 TIER 22	33,750 lbf (150 kN)	BULK
AASHTO M-306-10 H 20	40,000 lbf (178 kN)	BULK
AASHTO M-306-10 H 25	50,000 lbf (222.4 kN)	BULK
ASTM-457	46,000 lbf (205 kN)	BULK

FEATURES



HDPE Bodies

Allows for easy field alteration with standard tools and no toxic dust. HDPE bodies do not absorb water and therefore maintain structural integrity with no material degradation.



Never Seize

Simply the quickest, most efficient field replacement system in the industry. This patented Channell fastening system allows bolts to be securely fastened through sand, dirt and mud.



SELF-LOCK™

Our BULK family of vaults now come with the **Self-Lock** cover security option. Self-Lock covers are secured quickly and easily with an audible “Click” by simply pressing/pushing the lid closed eliminating the need for standard bolts. No more lids floating away or being damaged by lawnmowers!

Design and specifications may vary.

BULK SIZES AND OPTIONS

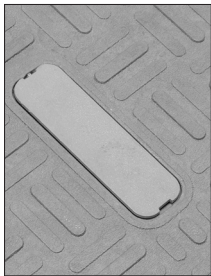
Size	Depth (in)	Available Lids	Bolt Type	Composite Ring
12" x 12"	12	Tier 22	Hex/Penta/Johnny	N
11" x 18"	12/18	Tier 22	Hex/Penta/Johnny	N
13" x 24"	12/18/24	LD/Tier 22/H-20	Hex/Penta/Self-Lock/L-Bolt/Johnny	N
17" x 30"	12/18/24/36	LD/Tier 22/H-20	Hex/Penta/Self-Lock/L-Bolt/Johnny	Y
24" x 36"	12/18/24/30/36/48	LD/Tier 22/H-20	Hex/Penta/Self-Lock/L-Bolt/Johnny	Y
30" x 48"	18/24/30/36/50	LD/Tier 22/H-20	Hex/Penta/L-Bolt*/Johnny	Y
36" x 60"	24/36/48	Tier 22	Hex/Penta/Johnny	N
48" x 60"	36/48	Tier 22	Hex/Penta/Johnny	N

- LD (Light Duty) = 3,000lb Test Load
- Tier 22 = 33,750lb Test Load
- H-20 (Ductile Iron) = 56,200lb Test Load
- Hex = 9/16"
- Penta = 7/8"
- Self-Lock = 7/16" Hex
- L-Bolt = 7/16" Hex
- "Johnny" = 1/2" Security Hex
- L-Bolt* = 3048 LD Lid Only

STANDARD FEATURES



Anti-Slip Tread Design



Anti-Trip Cover



Recessed Lifting Pin
with Cover



Flush Mounted
Sidewall Racks
Increase Usable Space



Logo Puck
(Custom Options Available)

AVAILABLE FEATURES



Self-Lock
Cover
Protection



L-Bolt Security
System (SHIELD
Cover Shown)



Marker Locator
Device



Swing-Arm with
Butterfly
Mounting Plate



Cable Hook
Bracket



Step Bracket
with Wedge

BULK PART NUMBER MATRIX

				BULKU	XXXX	XX	X		XX	X	XXX
Family											
Body Size											
	1212	12" x 12"	2436	24" x 36"							
	1118	11" x 18"	3048	30" x 48"							
	1324	13 "x 24"	3660	36" x 60"							
	1730	17" x 30"	4860	48" x 60"							
Body Depth (inches)											
	12	(1212, 1118, 1324, 1730, 2436)									
	18	(1118, 1324, 1730, 2436, 3048)									
	24	(1324, 1730, 2436, 3048, 3660)									
	30	(2436, 3048)									
	36	(1730, 2436, 3048, 3660, 4860)									
	48	(2436, 3660, 4860)									
	50	(3048)									
Brackets/Options											
	0	None									
	E	Vault Divider Panel (1730-24, 2436-24, 3048-36 Only)									
	M	Marker/Locator									
	R	Rapid Locate Device (1324, 1730, 2436, 3048, 3660 Only; Not available with Bolt Type 3 or 6)									
	V	Adds Full Vertical Racking to Vault (Not Req'd for 3660, 4860 or Cover Type 17)									
	Z	5 x 7 Logo Plate									
Cover Type											
	01	Solid Thermoplastic		(1324, 1730, 2436, 3048)							
	02	Split Thermoplastic with 1212 Plug		(1730, 2436)							
	04	Split Thermoplastic with 1010 Plug		(1730, 2436)							
	06	Shield Solid Lid (Tier 22)		(1212, 1118, 1324, 1730, 2436)							
	08	Shield Split Lid (Tier 22)		(3048, 3660, 4860)							
	09	Shield Solid Lid with Rapid Locate		(1324, 1730, 2436) (> 12" deep)							
	10	Shield Split Lid with Rapid Locate		(3048, 3660)							
	11	Split Thermoplastic for Cabinet/OPF1420		(3048)							
	17	Ductile Iron Lid and Ring		(1324, 1730, 2436, 3048)							
Bolt Type											
	0	No Bolts									
	1	Hex Bolt		(9/16" Hex-Head)							
	2	Penta Bolt		(7/8" Penta-Head)							
	3	L-Bolt		(7/16" Hex-Head)							
	4	Johnny Bolt		(1/2" Hex-Head Security "Allen" Bolt)							
	6	Self-Lock		(7/16" Hex-Head (1324, 1730, 2436) (Thermoplastic & Shield Solid Lid Only)							
Logos											
STANDARD LID LOGOS											
	001	Channell USA (no logo)			013	Wastewater			025	Controls	
	002	Electric			014	Non-Potable Water			026	Lighting	
	003	Street Lighting			015	Electric w/Locator			027	High Voltage	
	004	Communications			016	Telecommunications w/Locator			028	Data	
	005	Gas			017	Gas w/Locator			029	Fiber Optics	
	006	Water			018	Water w/Locator			030	Illumination	
	007	Signal			019	Wastewater w/Locator			031	Power/Telecom	
	008	Power			020	Channell USA w/Locator (no logo)			032	Electric	
	009	Telecommunications			021	Broadband w/Locator			033	Fiber	
	010	Traffic Signal			022	Fiber Optic Cable w/Locator			034	Low Voltage	
	011	Fiber Optic Cable			023	Communications w/Locator			035-099	future standard logos	
	012	Broadband			024	Ground					

CUSTOM PRODUCT

101 - 999 "Specials" (i.e. non-standard logos, custom brackets, etc)

- NOT ALL COMBINATIONS ARE AVAILABLE IN ALL SIZES
- NOT ALL OPTIONS RELEASED FOR PRODUCTION

BULK WEIGHT COMPARISON

Assembly Size	"Polymer Concrete Nominal Assembly (lbs)"	"SHIELD/BULK Nominal Assembly (lbs)"
12" x 12" x 12"	48	22
11" x 18" x 12"	69	32
11" x 18" x 18"	80	33
13" x 24" x 12"	104	37
13" x 24" x 18"	123	48
13" x 24" x 24"	155	58
17" x 30" x 12"	155	51
17" x 30" x 18"	177	56
17" x 30" x 24"	202	71
24" x 36" x 24"	311	105
24" x 36" x 30"	355	121
24" x 36" x 36"	407	132
30" x 48" x 24"	464	188
30" x 48" x 36"	600	229
36" x 60" x 36"	1058	389
36" x 60" x 48"	1320	454
48" x 60" x 36"	1750	512
48" x 60" x 48"	2000	587

Box Size	"Polymer Concrete Nominal Box (lbs)"	"BULK Nominal Box (lbs)"
12" x 12" x 12"	36	14
11" x 18" x 12"	41	21
11" x 18" x 18"	52	22
13" x 24" x 12"	54	21
13" x 24" x 18"	73	32
13" x 24" x 24"	105	42
17" x 30" x 12"	70	25
17" x 30" x 18"	92	30
17" x 30" x 24"	117	45
24" x 36" x 24"	181	55
24" x 36" x 30"	225	71
24" x 36" x 36"	277	82
30" x 48" x 24"	244	88
30" x 48" x 36"	380	129
36" x 60" x 36"	588	209
36" x 60" x 48"	850	274
48" x 60" x 36"	750	230
48" x 60" x 48"	1000	305

Cover Size	"Polymer Concrete Nominal Cover (lbs)"	"SHIELD Nominal Cover (lbs)"
12" x 12"	12	8
11" x 18"	28	11
13" x 24"	50	16
17" x 30"	85	26
24" x 36"	130	50
30" x 48"	220	100*
36" x 60"	470	180**
48" x 60"	700	282***

**Contact Your Local Channell
Representative**

* 50lbs per 1/2 cover

** 90lbs per 1/2 cover

*** 141lbs per 1/2 cover

