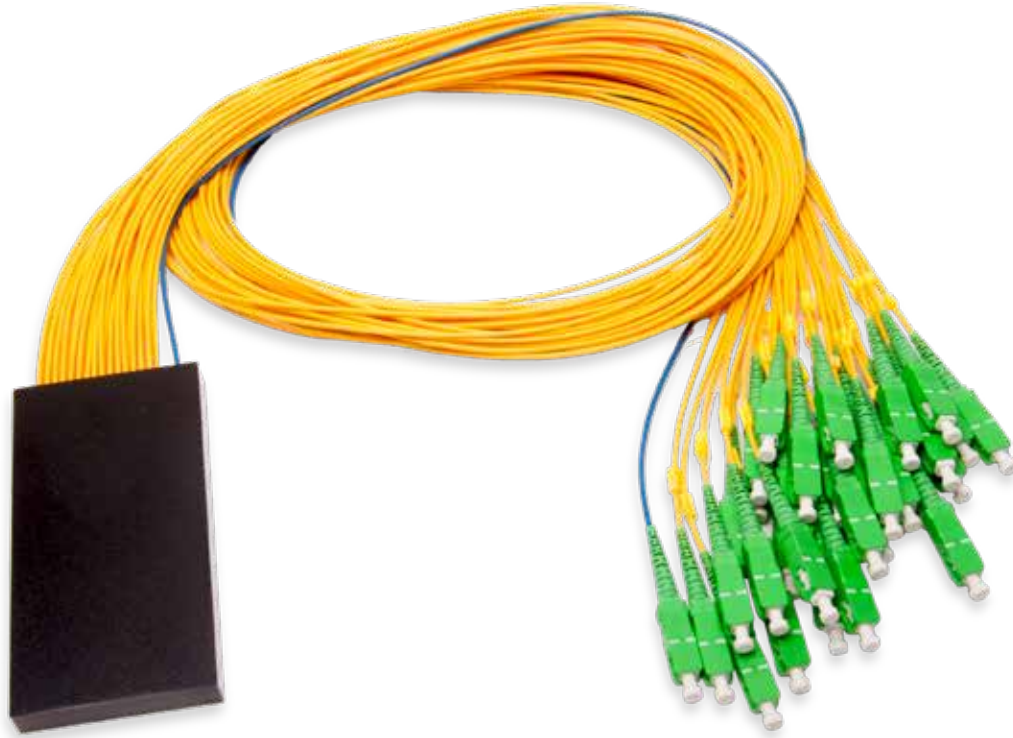


OPTIMUS FIBER HUB SPLITTER MODULE



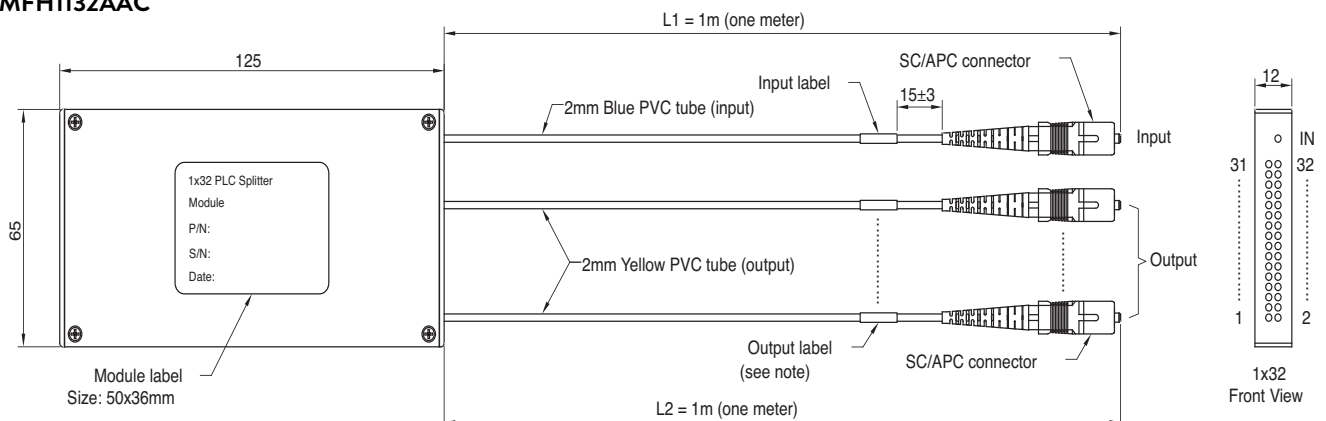
FEATURES

- High Reliability and Performance
- All PLC splitters exceed Telcordia GR 1209 and GR 1221 specifications
- All connectors exceed Telcordia GR 326 specifications

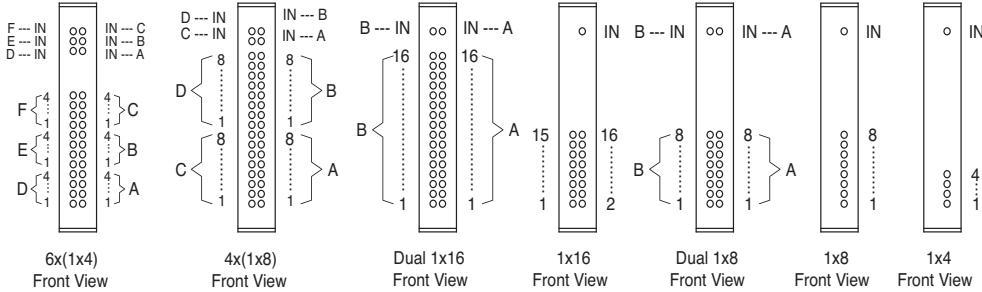
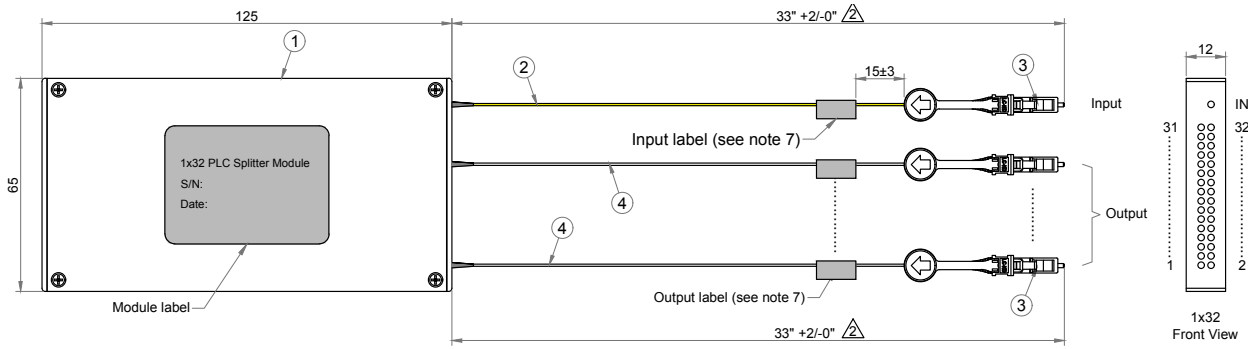
APPLICATIONS

- Telecommunications
- Network Monitoring
- FTTX

SMFH1132AAC



SMFH1132BBC



Note: The single PLC Splitter modules will not have an input label.
 For example :
1x32 Module
 Input: no label
 Output: 1, 2, 3 ... 32
Dual 1x16 Module
 1x16 input A: A
 1x16 output A: A-1, A-2, A-3 ... A-16
 1x16 input B: B
 1x16 output B: B-1, B-2, B-3 ... B-16

SPECIFICATIONS (ALL TYPES)

CHANNEL NUMBER	1x4	1x8	1x16	1x32
Operating Wavelength Range (nm)	1260 ~ 1650	1260 ~ 1650	1260 ~ 1650	1260 ~ 1650
Insertion loss Max. (dB) ^{1,2,3}	8.0	11.2	14.2	17.5
Uniformity Max. (dB) ^{1,2,3}	0.8	1.0	1.4	1.7
PDL Max. (dB) ^{1,2,3}	0.2	0.3	0.3	0.3
Return Loss Min. (dB) ^{1,2,3}	55	55	55	55
Directivity Min. (dB) ^{1,2,3}	55	55	55	55
Operating /Storage Temperature (°C)	-40 ~ +85°	-40 ~ +85°	-40 ~ +85°	-40 ~ +85°
Fiber Type	G.657A1	G.657A1	ITU-T G.657.A1	ITU-T G.657.A1
Dimensions LxWxH (mm)	125 x 65 x 12	125 x 65 x 12	125 x 65 x 12	125 x 65 x 12
Input Connector Type	SC/APC	SC/APC	SC/APC	SC/APC or LC/APC
Output Connector Type	SC/APC	SC/APC	SC/APC	SC/APC or LC/APC

1. Measured at room temperature 2. Measured at 1310 and 1550nm 3. Including PDL loss

1x32 PART NUMBERS

PART #	DESCRIPTION
SMFH1132AAC	1x32 splitter module for Green Hornet Fiber Hub, SC/APC
SMFH1132BBC	1x32 splitter module for Green Hornet Fiber Hub, LC/APC



www.channell.com