



FiberX™ is a superhero fiber optic product team in the Channell Universe that is dedicated to the protection of fiber optics. FiberX is committed to making the world of fiber optics a better place through design, innovation, and service.

FiberX products feature an optimal fiber splice management system that is simple, organized and craft-friendly. With a wide range of features and accessories, FiberX offers a customized solution to meet the needs of any FTTX application.

The strength of FiberX has evolved from Channell's 90 years of experience and leadership with enclosures for the telecommunication and broadband industries. FiberX embodies the same reliable and proven features that have contributed to Channell's reputation and great success.

FOR MORE INFORMATION ABOUT FIBERX PRODUCTS, CALL 800-423-1863.



BUTT SPLICE CONFIGURATION CLOSURE SERIES



FREE-BREATHING CLOSURE SERIES



INLINE SPLICE CONFIGURATION CLOSURE SERIES



ENVIRONMENTALLY SEALED PEDESTAL SERIES



CABLE MANAGEMENT PIT/VAULT SYSTEM SERIES



CHANNELL

Where The Industry Connects.

UNITED STATES: Channell Commercial Corporation, Temecula, CA, United States • Tel 800.423.1863 • Fax 951.296.2322

CANADA: Channell Canada, Inc., Mississauga, ON, Canada • Tel 905.565.1700 • Fax 905.565.8282

EUROPE, MIDDLE EAST, AFRICA: Channell Ltd., Dartford, United Kingdom • Tel 44.1322.312590 • Fax 44.1322.508490

AUSTRALIA, ASIA, PACIFIC RIM: Channell Pty. Ltd., Seven Hills, NSW, Australia • Tel 61.2.8884.4111 • Fax 61.2.8814.8841

DEVELOPING LOCATIONS: Dallas, TX, United States • Mexico City, D.F., Mexico

WORLDWIDE HEADQUARTERS: Channell Commercial Corporation • Tel 951.719.2600 • 26040 Ynez Road, P.O. Box 9022, Temecula, CA 92589-9022, United States

www.channell.com

All specifications subject to change without notice. Printed in U.S.A.

© 2016 Channell Commercial Corporation. All rights reserved.

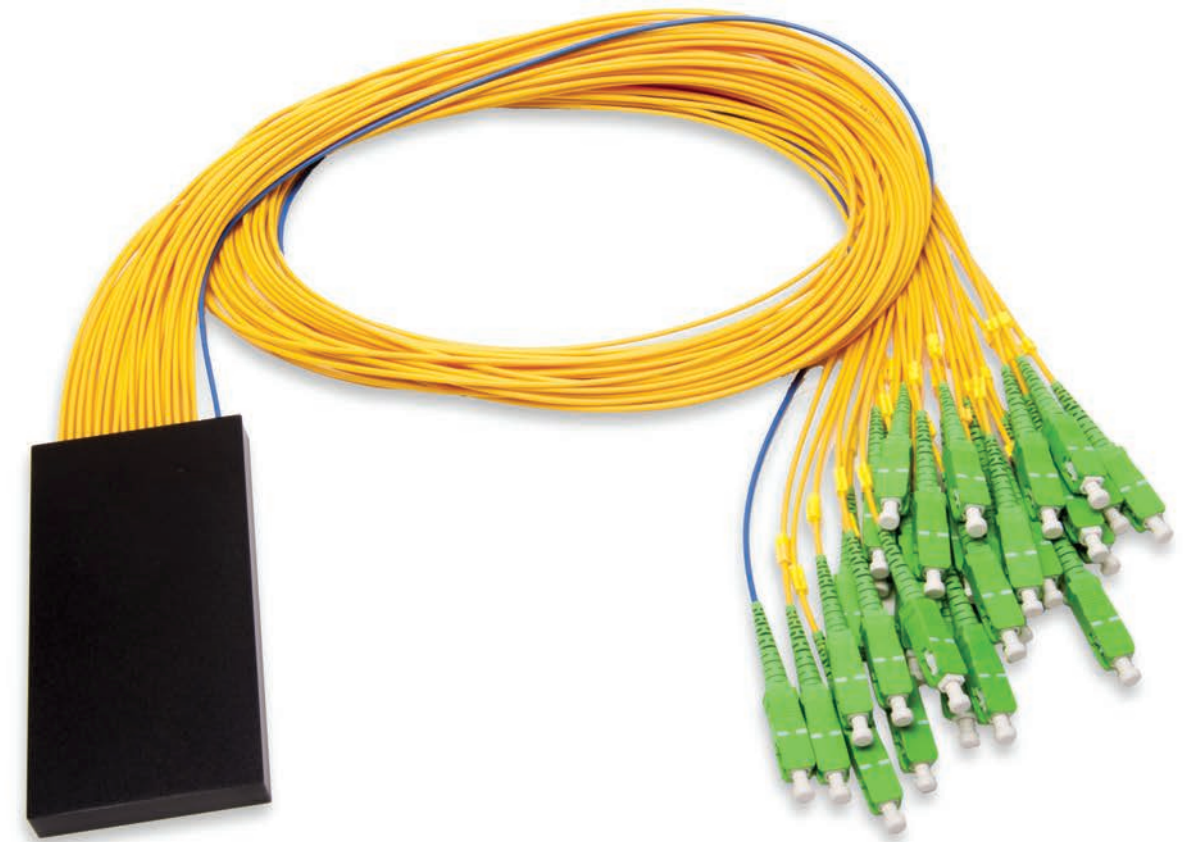
FIBER HUB SPLITTER MODULE



Data Sheet

FIBER HUB SPLITTER MODULE

All PLC splitters exceed Telcordia GR 1209 and GR 1221 specifications



Dedicated to protecting fiber optics through design, innovation, and service.

SPECIFICATIONS 1X32

Parameters		Specifications
Channel Number		1x32
Operating Wavelength Range		1260~1650nm
Insertion Loss Max. ^{1,2,3}		17.5dB
Uniformity Max. ^{1,2,3}		1.7dB
PDL Max. ^{1,2,3}		0.3dB
Return Loss Min. ^{1,2,3}		55dB
Directivity Min.		55dB
Operating/Storage Temperature		-40~+85°C
Fiber Type		G.657A1
Dimensions LxWxH		125x65x12mm
Connector Type	Input	SC/APC
	Output	SC/APC

SPECIFICATIONS 1X16

Parameters		Specifications
Channel Number		1x16
Operating Wavelength Range		1260~1650nm
Insertion Loss Max. ^{1,2,3}		14.2dB
Uniformity Max. ^{1,2,3}		1.4dB
PDL Max. ^{1,2,3}		0.3dB
Return Loss Min. ^{1,2,3}		55dB
Directivity Min.		55dB
Operating/Storage Temperature		-40~+85°C
Fiber Type		G.657A1
Dimensions LxWxH		125x65x12mm
Connector Type	Input	SC/APC
	Output	SC/APC

SPECIFICATIONS 1X8

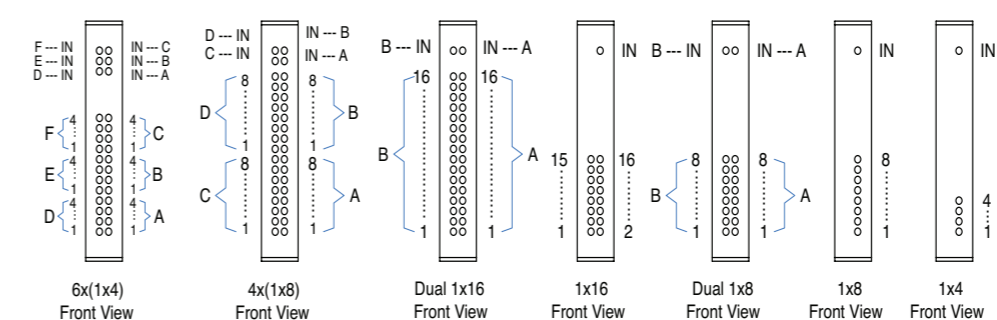
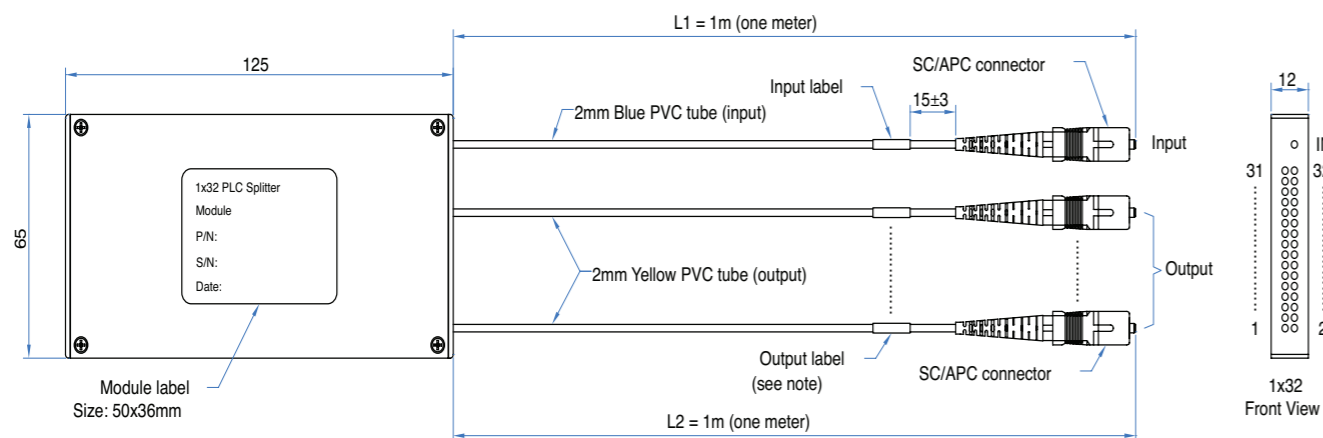
Parameters		Specifications
Channel Number		1x8
Operating Wavelength Range		1260~1650nm
Insertion Loss Max. ^{1,2,3}		11.2dB
Uniformity Max. ^{1,2,3}		1.0dB
PDL Max. ^{1,2,3}		0.3dB
Return Loss Min. ^{1,2,3}		55dB
Directivity Min.		55dB
Operating/Storage Temperature		-40~+85°C
Fiber Type		G.657A1
Dimensions LxWxH		125x65x12mm
Connector Type	Input	SC/APC
	Output	SC/APC

SPECIFICATIONS 1X4

Parameters		Specifications
Channel Number		1x4
Operating Wavelength Range		1260~1650nm
Insertion Loss Max. ^{1,2,3}		8.0dB
Uniformity Max. ^{1,2,3}		0.8dB
PDL Max. ^{1,2,3}		0.2dB
Return Loss Min. ^{1,2,3}		55dB
Directivity Min.		55dB
Operating/Storage Temperature		-40~+85°C
Fiber Type		G.657A1
Dimensions LxWxH		125x65x12mm
Connector Type	Input	SC/APC
	Output	SC/APC

Notes:

1. Measured at room temperature
2. Measured at 1310 and 1550nm
3. Including PDL loss



Note: The single PLC Splitter modules will not have an input label.
 For example :
1x32 Module
 Input: no label
 Output: 1, 2, 3 ... 32
Dual 1x16 Module
 1x16 input A: A
 1x16 output A: A-1, A-2, A-3 ... A-16
 1x16 input B: B
 1x16 output B: B-1, B-2, B-3 ... B-16